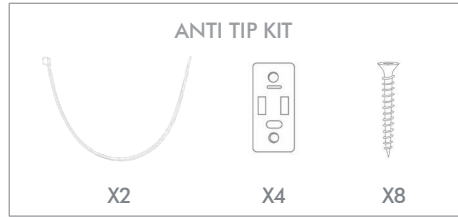


# OLIVER BONAS

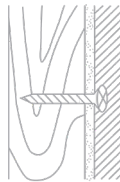
## BAMBOU TALL BOY



### ASSEMBLY



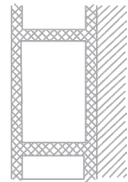
Please use the anti tip kit provided for safety. Please ensure the correct fittings are used for the chosen wall substrate:



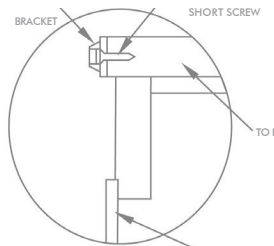
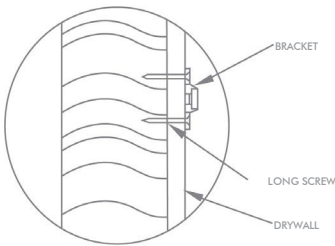
WOOD



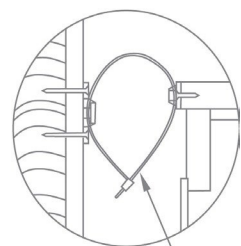
BRICK



CAVITY  
(Special fittings needed)



BACK PANEL



STRAP

1. Mark the location of the hole on the wall using bracket approx 1" below the top of furniture. Predrill the holes at marked location & insert wall plug. Align bracket onto wall plug & secure using long screws.

2. Move the furniture to its final position against the wall and mark the location of the wall bracket on the back of the furniture. The bracket that attaches to the furniture must go into the solid wood piece at the top, not into the thinner back panel. Move the furniture away from the wall and place a bracket on the mark. Mark and drill holes for the screws using a 3/32 drill bit. Attach the bracket to the furniture using the short screws.

3. Move the furniture to its final position and align the bracket on the furniture with the bracket on the wall. Thread the strap through the bracket as shown, and tighten until snug. Do not over-tighten.

### IMPORTANT

Oliver Bonas  
Unit F, Davis Road Industrial Park  
Chessington KT9 1TQ

Oliver Bonas Ireland Ltd  
The Black Church St Mary's Place  
Dublin 7 Republic of Ireland

# OLIVER BONAS

## BAMBOU TALL BOY

Check that the wall bracket is firmly screwed into the stud,  
the furniture bracket is firmly attached to the frame, and the strap is snug.

# OLIVER BONAS

## BAMBOU TALL BOY

We hope you love your purchase, however if you aren't completely happy, please retain your packaging to ensure its safe return

Each Bambou piece has been lovingly made by skilled craftspeople

### INDONESIA MAHOGANY WOOD & MDF

The framework is made from farmer mahogany  
The backing and base panels are made from MDF

Each piece has been handmade and hand sprayed  
Variations in colour and finish may occur

### FEATURES

Each leg has been fitted with levellers, simply rotate to get the perfect level

### CARING FOR YOUR FURNITURE

To keep your new furniture happy, make sure you keep it dry  
Do not place it in front of a radiator or in sunlight and avoid direct heat  
Similarly, do not place it outdoors or in any moist environments

The maximum weight for the console top is 40kg and for each drawer is 5kg  
Ensure weight is evenly distributed  
Take care not to overload  
Drawers are assembled

Take care when moving your furniture, do not drag as  
this may weaken the joints and construction

Not suitable for children's rooms  
Domestic use only  
Keep away from fire  
Be sure to use a coaster for your cup of tea

### CLEANING

Wipe with a damp cloth, followed by a soft dry cloth  
Any spills should be wiped dry immediately to avoid discolouration and staining  
Avoid abrasive cleaners

Retain this information for reference